



### Immersible pressure pumps

This range of immersible pumps is unique. They have an internal pump control system which automatically operates your pump as water is required. The immersible pumps can be installed outside your water tank as with conventional pumps, or you can install the pump inside the tank.

#### Benefits of a pressure pump immersed in your tank

- No pump shed
- No noise
- Pump cannot be flooded as is rated IP68 submersible

#### Uses

- Immersible pumps are ideal for:
- Buried water tanks
  - Retention tanks
  - Pressure pump for house

#### Features

- Ingress protection IP68 (submersible)
- Self-priming - just fill pump with water the first time
- Can be installed inside or outside the water tank
- Sensitive switching system, operates pump when pressure drops to 2.2 bar or 30psi
- Self tests every 72 hours to ensure water system ready to operate instantly
- Run-dry protection
- Stainless steel pump body
- High pressure water supply, up to 90 psi
- Quiet and efficient high performance

### X-AJE

Self-priming jet pump complete with automatic pressure control



### X-AMO

Self-priming horizontal multistage pump complete with automatic pressure control

### X-AMV

Self-priming vertical multistage pump with automatic pressure control



### Applications

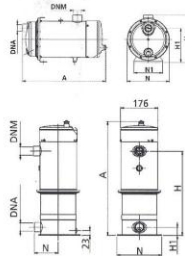
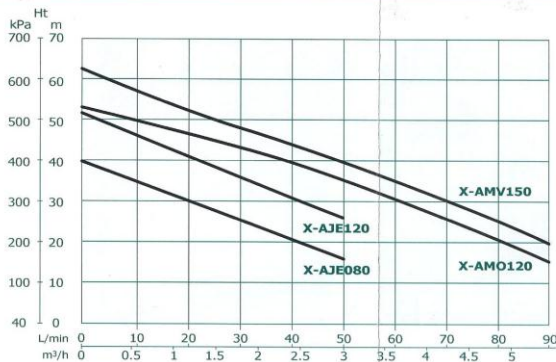
- Domestic water pressure system
- Retention tank pumps
- Water reuse systems
- Water pressure boosting
- Garden irrigation
- Water transfer
- Buried water storage tanks
- Above ground water tanks
- Treatment systems for drinking water

These pumps are designed to pump clean water free of abrasive and suspended particles.

HYDRAULIC PERFORMANCE TABLE

Model	Voltage	Power P <sub>2</sub>		Capacitor	Current (Amps)	Flowrate L/min							
		kW	hp			Head (m)							
X-AJE080	230	0.6	0.8	16uF	4.5	0	10	20	30	40	50	60	80
X-AJE120	230	0.9	1.2	20uF	5.9	40	33	30	24	20	15		
X-AMO120	230	0.9	1.2	20uF	7.2	51	45	40	34	30	24	8	
X-AMV150	230	1.1	1.5	22uF	7.6	52	49	45	43	40	35	30	20
						63	58	53	49	45	41	36	25

### Pump Performance



**X-AJE080 X-AMO120**  
**X-AJE120 X-AMV150**

#### Technical features

- Pump, body, back bracket - stainless steel 304
- Shaft - stainless steel 416
- Impellers, diffuser, jet and venturi - technopolymer
- Mechanical seal: silicon carbide/silicon carbide
- Class F water-cooled motor with integrated thermal protection
- Electric power cable 10 metres long
- Protection class of the immersible series is IP68
- Temperature of the pumped liquid is not to exceed 37°C

#### Electronic control

- Switches pump on at 2.2 bar (1.5bar on some models)
- Switches the pump off when flow less than 1.5 l/m
- Flow sensor uses the best cobalt samario magnets
- System check every 72 hours
- Electronics enclosed within technopolymer box for safety within pump

Your Local Supplier



T: 021 952 585  
E: global.pumps@slingshot.co.nz  
PO Box 305 143  
Triton Plaza, Albany  
Auckland, New Zealand

